



# FOR HEAVY DUTY GROUND VEHICLES

(continued)

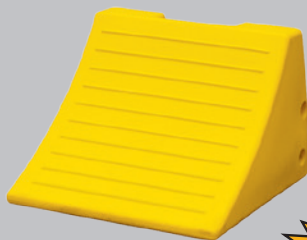
## FEATURES

- The #1 selling wheels chocks in the mining industry
- MC series wheel chocks are approved and being used by Caterpillar and mines worldwide
- Weather-resistant urethane construction
- Resistant to oils, fuels, and solvents
- Meets MSHA specifications

### HEAVY DUTY MC3009 SERIES

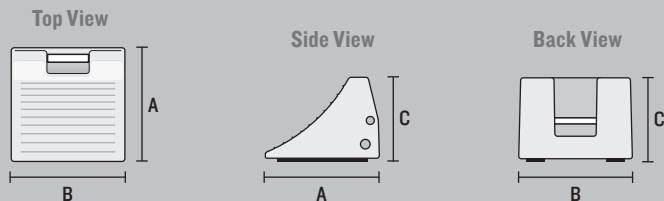
RECOMMENDED TIRE DIAMETER 46" TO 65" (116.8 CM TO 165.1 CM)

MODEL: MC3009



MCSTUD

- Tough urethane construction
- Recessed carrying handle
- Mounting hole for ropes, chains or brackets
- Replaceable rubber anti-slip traction pads
- Molded-in ANSI Z535.4 compliant proper chocking guidelines
- Safety yellow color



MODEL	A: LENGTH	B: WIDTH	C: HEIGHT	WEIGHT	COLOR
MC3009	15 in. (38.1 cm)	15.1 in. (38.4 cm)	11 in. (28.0 cm)	14.5 lb. (6.6 kg)	Yellow
MCPAD12X2.5	Replacement traction pad for MC3009 & MC1909			1.5 lb. (.7 kg)	Black
MCSTUD-3/8X1.5	Optional stainless steel studs for snow and ice. Requires 4 per MC3009 and MC1909			.06 lb. (.027 kg) Each	Grey

- For mine support equipment such as lubrication trucks and maintenance vehicles
- For Tire Diameter 46" to 65" (116.8 cm to 165.1 cm)
- Max Gross Vehicle Operating Weight up to 245,000 lbs. or 111,130 kg
- For Payloads up to 70 tons\* (63,503 kg) use two MC3009

**MC1900 Mounting Bracket for this chock is show below**

\* Ton is the U.S. standard, equivalent to 2,000 lb. (907 kg)

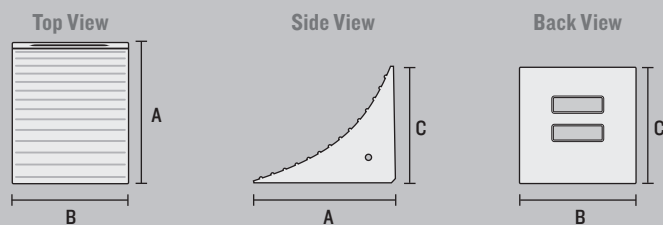
### HEAVY DUTY MC1210 SERIES

RECOMMENDED TIRE DIAMETER 65" TO 95" (165.1 CM TO 241.3 CM)

MODEL: MC1210



- Durable urethane construction
- Oil and chemical resistant
- Recessed carrying handle
- Molded-in "How to Use" guidelines
- High visibility orange color
- Mounting hole for ropes, chains or brackets



MODEL	A: LENGTH	B: WIDTH	C: HEIGHT	WEIGHT	COLOR
MC1210	17 in. (43.2 cm)	14 in. (35.6 cm)	14 in. (35.6 cm)	25 lb. (11.3 kg)	Orange

- For mining and construction haul trucks & support equipment
- For Tire Diameter 65" to 95" (165.1 cm to 241.3 cm)
- Max Gross Vehicle Operating Weight up to 366,000 lbs. or 166,015 kg
- For Payloads up to 100 tons\* (90,718 kg) use two MC1210

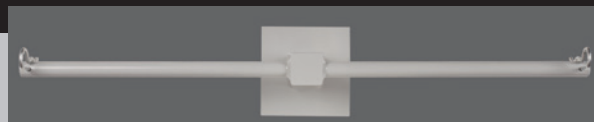
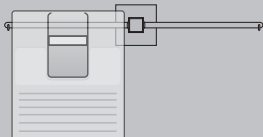
**MC1900 Mounting Bracket for this chock is show below**

\* Ton is the U.S. standard, equivalent to 2,000 lb. (907 kg)

### MOUNTING BRACKET

#### FOR MC SERIES CHOCKS

MODEL: MC1900



MODEL	DESCRIPTION	SPECIFICATIONS	WEIGHT
MC1900	Universal Dual Mounting Bracket* holds 2 each of MC Series Wheel Chocks. Primer Finish. *Mounting Hardware NOT included.	36" (91.4 cm) Length Bracket Rod with 6" (15.2 cm) Mounting Plate	16 lb. (7.3 kg)