



# 4-CHANNEL HEAVY DUTY

System features patented T-Connectors

## FEATURES

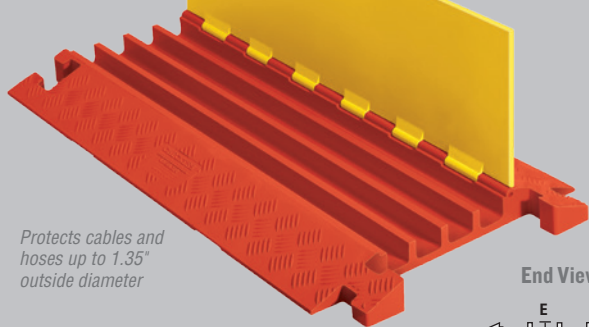
- Protects cables and hoses up to 1.35" outside dia.
- Patented T-Connectors to extend to any length
- Reinforced hinged lid for easy cable placement
- All-weather polyurethane construction
- Patented 5-bar tread surface for maximum traction
- Easy to transport, setup, disassemble, and store



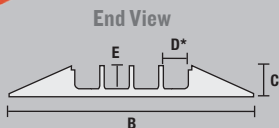
T-Connector

MODEL: CP4X125

LINEBACKER® 4-CHANNEL CABLE PROTECTOR with hinged lid provides a safe crossing for vehicles and pedestrian traffic while protecting valuable electrical cables and hose lines from damage in extreme weather conditions and work environments. Modular interlocking design is ideal for use in oil and gas applications, mining, military, and other industrial environments with heavy trucks and forklifts.



Protects cables and hoses up to 1.35" outside diameter



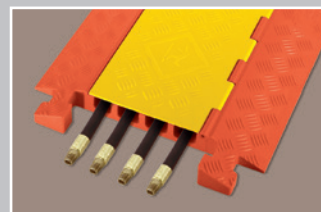
### Lid/Base Color Options



### LOAD CAPACITY

Max load tested at 70°F (21°C)

20,150 lb./Tire (9,140 kg)  
40,300 lb./Axle (18,280 kg)



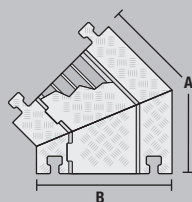
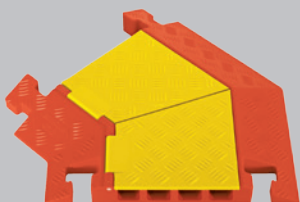
U.S. Patent No: D415,112

\*NOTE: One of the channels is 1.54 in. wide (3.92 cm)

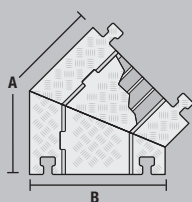
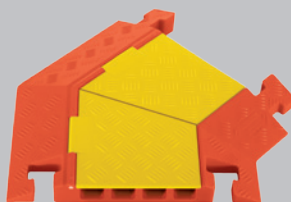
MODEL	A: LENGTH	B: WIDTH	C: HEIGHT	D: CHANNEL WIDTH	E: CHANNEL HEIGHT	WEIGHT
CP4X125	36 in. (91.4 cm)	20 in. (50.8 cm)	2.31 in. (5.72 cm)	1.85 in. (4.71 cm)	1.35 in. (3.43 cm)	26 lb. (11.8 kg)

## ACCESSORIES for Linebacker 4-Channel Heavy Duty Cable Protectors

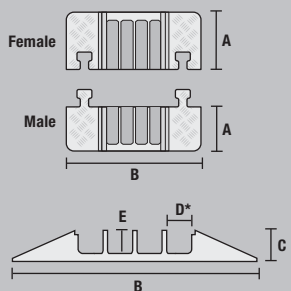
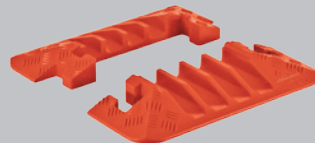
45° LEFT TURN  
MODEL: CPT4X125-L



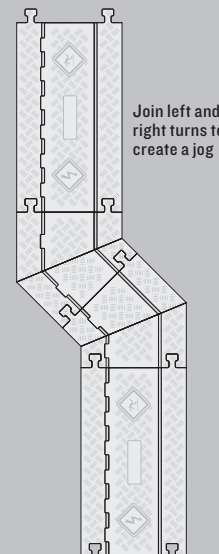
45° RIGHT TURN  
MODEL: CPT4X125-R



END CAPS (Pair Only)  
MODEL: CPEC4X125



\*Note: One of the channels is 1.54 in. wide (3.92 cm)



Join left and right turns to create a jog

Turns Color: Y/O = Yellow Lid with Orange Ramps

End Caps Color: O = Orange

MODEL	A: LENGTH	B: WIDTH	C: HEIGHT	D: CHANNEL WIDTH*	E: CHANNEL HEIGHT	WEIGHT	
45° LEFT TURN	CPT4X125-L	25 in. (63.5 cm)	20 in. (50.8 cm)	2.31 in. (5.72 cm)	1.85 in. (4.71 cm)	1.35 in. (3.43 cm)	13 lb. (5.9 kg)
45° RIGHT TURN	CPT4X125-R	25 in. (63.5 cm)	20 in. (50.8 cm)	2.31 in. (5.72 cm)	1.85 in. (4.71 cm)	1.35 in. (3.43 cm)	13 lb. (5.9 kg)
END CAPS (PAIR)	CPEC4X125	Female: 7.5 in. (19 cm)	20 in. (50.8 cm)	2.31 in. (5.72 cm)	1.85 in. (4.71 cm)	1.35 in. (3.43 cm)	3.5 lb. (1.6 kg)
		Male: 5.25 in. (13.3 cm)					